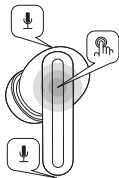
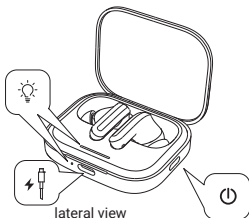


# Redmi Buds 5 User Manual



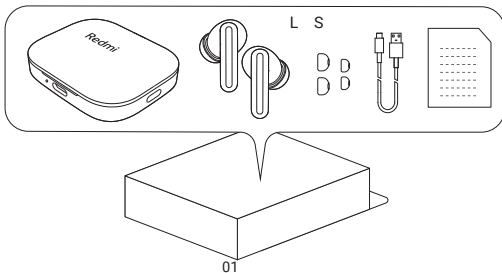
## Product overview

Read this manual carefully before use, and retain it for future reference.

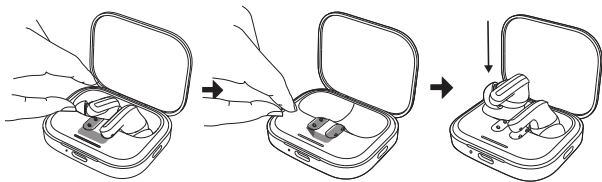


The touch area is located on the upper part of the earbud stem (as shown in the figure)

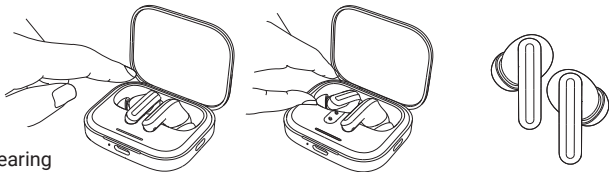
## Package contents



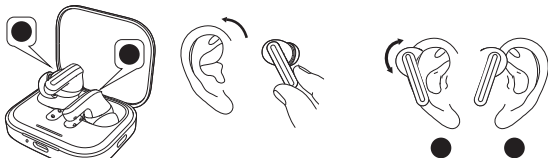
## First time using



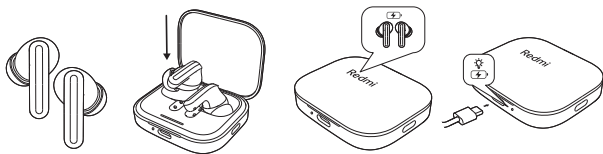
## Take out earbuds



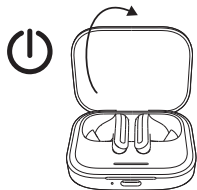
## Wearing



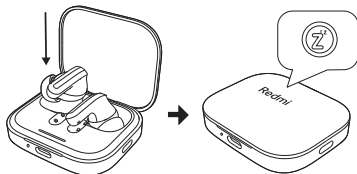
## Charging



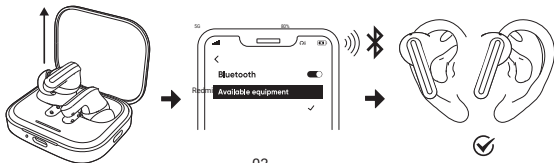
## Turning on



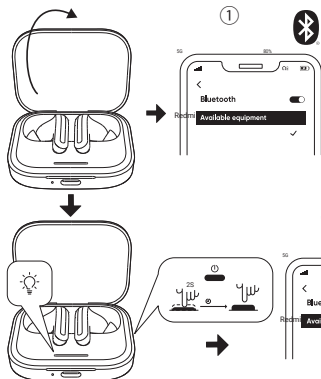
## Turning off



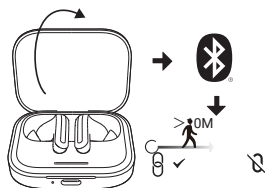
## First time connection



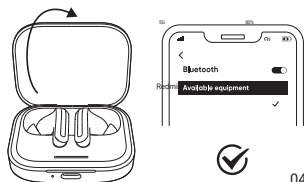
## Dual-device connection



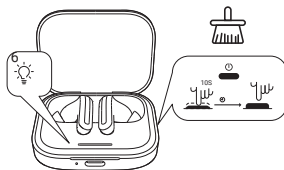
## Disconnected



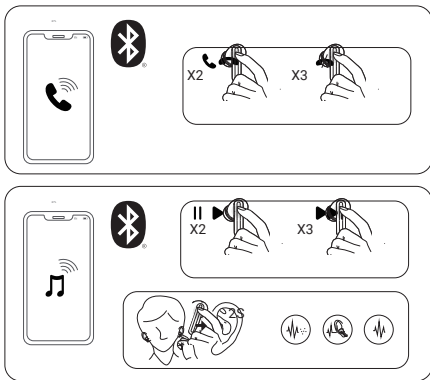
## Automatic connection



## Restoring factory settings



# Function overview



## Connecting with App

1. Scan the QR code to download and install Xiaomi Earbuds to enable more features.
2. Follow the instructions on the app to connect the earbuds.



Scan the QR code to download Xiaomi Earbuds App.

Note: During the connection process, please make sure that the smartphone's Bluetooth is enabled. Put the earbuds into the charging box, open the lid, and ensure that your smartphone is near the box.

## Specifications

Name: Wireless Earphones

Model: M2316E1

Frequency Band: 2402-2480 MHz

Max RF Output Power(EIRP): < 20 mW

Operating Temperature: 0 °C to 45 °C

Charging Case

Charging Port: Type-C

Battery Capacity: 480 mAh

Input: 5 V ---500 mA

Output: 5 V ---320 mA

Earbuds

Wireless Range: 10 m

(in an obstacle-free environment)

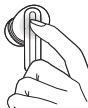
Input: 5 V ---150 mA

Wireless Connectivity:  
Bluetooth ®5.3

Compatible with: This product only supports certain Android or iOS systems. For detailed information, please check the product page on [www.mi.com](http://www.mi.com).

### Note:

Once the weather is cold outdoors and your hands become dry, the earbuds may not function when touching them.



## Important Safety Information

- The product has a built-in battery that can not be removed or replaced. To avoid damage to the battery or the product, do not disassemble or modify the battery by yourself. The battery can only be replaced by the authorized service providers and must be replaced with the same type. Replacement of a battery with an incorrect type may defeat a safeguard (such as catching fire, explosion and leakage of corrosive electrolyte). Do not dispose of used batteries with household waste. Disposal of this product and the used batteries shall comply with local laws and regulations.
- Do not attempt to disassemble, repair or modify the product, as this may cause fire or even completely damage the product.
- Keep the product's indicator away from the eyes of children and animals while the product is in use.
- Do not disassemble, puncture or crush the product nor expose it to fire.
- Please stop using the product immediately and seek medical assistance if the contact area on your skin shows signs of redness or swelling.



To prevent possible hearing loss, do not use high volume for long periods of time.

- This product is not a toy and may contain small parts. Please keep them out of the reach of children.
- Disposal of a battery into fire or a hot oven or water or other liquids or mechanically crushing or cutting of a battery, that can result in an explosion.
- Leaving a battery in an extremely high temperature surrounding environment that can result in an explosion or the leakage of flammable liquid or gas.
- A battery subjected to extremely low air pressure that may result in an explosion or the leakage of flammable liquid or gas.

- Product information and certification marks are located in the Charging Case.
- Enabling noise canceling may affect your awareness of surrounding sounds and alarms. Ensure that you are in a safe environment before using this function.
  - = The symbol indicates DC voltage.
- Do not expose the product to environments with a temperature that is too low or too high (below 0°C or above 45°C).

#### **Maintenance:**

- To maintain optimum sound quality, we recommend cleaning the ear tips of the wireless headphones regularly. This process can easily be done by removing the earpieces and then cleaning both earpieces with a cotton swab dipped in lukewarm water. Another cotton bud can be used to dry them. It is recommended to perform this procedure after each use or after an hour of listening to maintain cleanliness and an optimal listening experience.
- When not in use, store the headphones in the charging case and keep them at room temperature and in a humidity-free environment.
- Fully charge the headphones at least once every 6 months to maintain good battery condition.

The Bluetooth ® word mark and logos are registered trademarks owned by Bluetooth SIG, Inc. and any use of such marks by Xiaomi Inc. is under license. Other trademarks and trade names are those of their respective owners.



#### **EU DECLARATION OF CONFORMITY**

Hereby, Dongguan Yingsheng Electronic Technology Co., Ltd . declares that the radio equipment type M2316E is in compliance with Directive 2014/53/EU. The full text of the EU declaration of conformity is available at the following internet address:  
<http://www.mi.com/global/service/support/declaration.html>



#### **WEEE Information**

All products bearing this symbol are waste electrical and electronic equipment (WEEE as in directive 2012/19/EU) which should not be mixed with unsorted household waste. Instead, you should protect human health and the environment by handing over your waste equipment to a designated collection point for the recycling of waste electrical and electronic equipment, appointed by the government or local authorities. Correct disposal and recycling will help prevent potential negative consequences to the environment and human health. Please contact the installer or local authorities for more information about the location as well as terms and conditions of such collection points.



#### **FCC Compliance Statements**

This device complies with Part 15 of the FCC Rules. Operation is subject to the following two conditions: (1) this device may not cause harmful interference, and (2) this device must accept any interference received, including interference that may cause undesired operation.



**Caution:** Changes or modifications not expressly approved by the party responsible for compliance could void the user's authority to operate the equipment.

**Note:** This equipment has been tested and found to comply with the limits for a Class B digital device, pursuant to Part 15 of the FCC Rules. These limits are designed to provide reasonable protection against harmful interference in a residential installation. This equipment generates, uses and can radiate radio frequency energy and, if not installed and used in accordance with the instructions, may cause harmful interference to radio communications. However, there is no guarantee that interference will not occur in a particular installation.

If this equipment does cause harmful interference to radio or television reception, which can be determined by turning the equipment off and on, the user is encouraged to try to correct the interference by one or more of the following measures:

- Reorient or relocate the receiving antenna.
- Increase the separation between the equipment and receiver.
- Connect the equipment into an outlet on a circuit different from that to which the receiver is connected.
- Consult the dealer or an experienced radio/TV technician for help.

## ISED Compliance Statements

This device contains licence-exempt transmitter(s)/receiver(s) that comply with Innovation, Science and Economic Development Canada's licence-exempt RSS(s).

Operation is subject to the following two conditions:

- (1) This device may not cause interference.
- (2) This device must accept any interference, including interference that may cause undesired operation of the device.

## RF Exposure Compliance

This equipment complies with FCC/ISED radiation exposure limits set forth for an uncontrolled environment. End user must follow the specific operating instructions for satisfying RF exposure

The portable device is designed to meet the requirements for exposure to radio waves established by the FCC/ISED. These requirements set a SAR limit of 1.6 W/kg averaged over one gram of tissue. The highest SAR value reported under this standard during product certification for use when properly worn on the Head, with 0mm separation, compliance. This transmitter must not be co-located or operating in conjunction with any other antenna or transmitter.

## Warranty Notice

As a Xiaomi consumer, you benefit under certain conditions from additional warranties. Xiaomi offers specific consumer warranty benefits which are in addition to, and not instead of, any legal warranties provided by your national consumer law. The duration and conditions related to the legal warranties are provided by respective local laws. For more information about the consumer warranty benefits,

please refer to Xiaomi's official website <https://www.mi.com/en/service/warranty/>. Except as prohibited by laws or otherwise promised by Xiaomi, the after-sales services shall be limited to the country or region of the original purchase. Under the consumer warranty, to the fullest extent permitted by law, Xiaomi will, at its discretion, repair, replace or refund your product. Normal wear and tear, force majeure, abuse or damage caused by the user's negligence or fault are not warranted. The contact person for the after-sale service may be any person in Xiaomi's authorized service network, Xiaomi's authorized distributors or the final vendor who sold the products to you. If in doubt please contact the relevant person as Xiaomi may identify. Products which were not duly imported and/or were not duly manufactured by Xiaomi and/or were not duly acquired from Xiaomi or a Xiaomi's official seller are not covered by the present warranties. As per applicable law you may benefit from warranties from the non-official retailer who sold the product. Therefore, Xiaomi invites you to contact the retailer from whom you purchased the product.

93540/SDPPI/2023  
9003



Complies with  
IMDA Standards  
DB106135



Manufactured for: Xiaomi Communications Co., Ltd.

Manufactured by: Dongguan Yingsheng Electronic Technology Co., Ltd.

(a Mi Ecosystem company)

Address: Suite 8020, No. 156, Humen Avenue, Humen Town, Dongguan City, Guangdong Province, China

For further information, please go to [www.mi.com](http://www.mi.com)

User Manual Version: V1.0

Importer:  
Beryko s.r.o.  
Pod Vinicemi 931/2, 301 00 Plzeň  
[www.beryko.cz](http://www.beryko.cz)